



# Chugach Wilderness Lodge LLC

“A True Alaskan Wilderness Lodge  
Catering To The Outdoor Enthusiast.”

Hiking | Backpacking | Wildlife Viewing  
Fishing | Photography

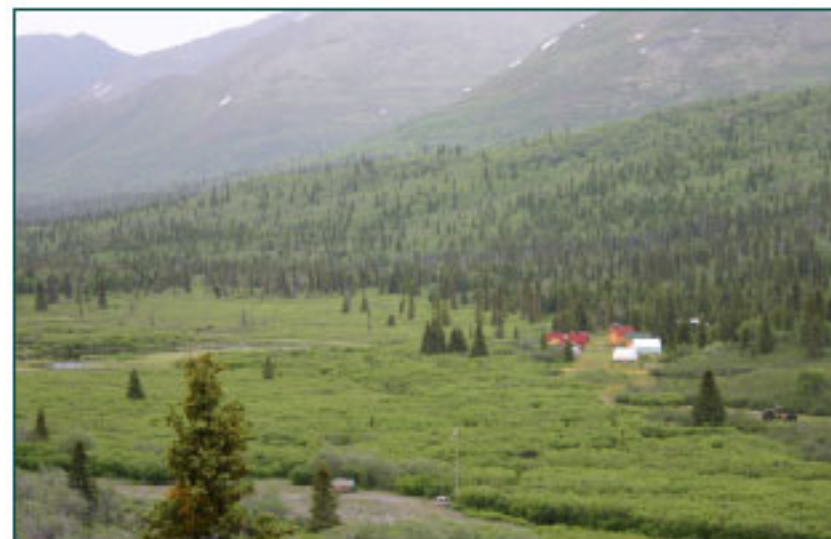
[www.chugachwildernesslodge.com](http://www.chugachwildernesslodge.com)

Our remote wilderness lodge, which is only accessible by bush plane, provides the ultimate Alaskan wilderness experience. The Chugach Wilderness Lodge is deep in the Chugach Mountains of Alaska and is surrounded by 1,000's of square miles of mountain wilderness. Our guests enjoy excellent wildlife viewing in a true pristine mountain environment. All of our guests experience the stunning mountain views from their own private cabins followed by a relaxing sauna and hot shower from our authentic log cabin bath house. Our meals are all home cooked and served family style in our log cabin lodge.

Our location provides spectacular wildlife viewing. You have an opportunity to see moose, black bear, grizzly bear, eagles, Dall sheep, mountain goat, wolves, and the occasional wolverine.

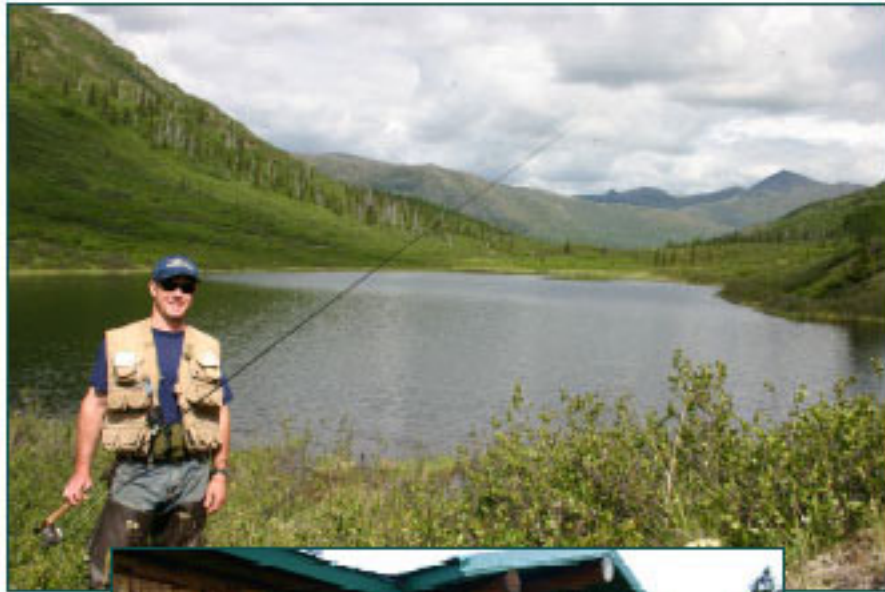
The most popular outdoor activities that are within walking distance of the lodge:

- Hiking
- Fly Fishing for Dolly Varden and Grayling
- Wildlife Viewing
- Backpacking
- Photography
- Glacier Exploration
- Gold Panning
- Hunting





One of the unique offerings of the Chugach Wilderness Lodge is the ability to customize each client's trip. With a maximum of ten guests in camp at any one time, we provide an intimate true wilderness experience. We will spend time visiting and getting to know our future guests before they even arrive in camp. This will allow us to plan an agenda that perfectly fits the expectations of our guests.



The Chugach Wilderness Lodge is located on the East side of the Chugach Mountains, approximately 200 miles Northeast of Anchorage and 40 miles Northeast of Valdez. The Chugach Wilderness Lodge is located on the edge of Manker Creek in between Tonsina Lake and the Klutina River approximately 30 miles South of Copper Center. The elevation of the lodge is 2,600 ft. The surrounding mountain peaks are as high as 6,000 feet.

Alaska  
Chugach Wilderness Lodge LLC  
[www.chugachwildernesslodge.com](http://www.chugachwildernesslodge.com)  
[info@chugachwildernesslodge.com](mailto:info@chugachwildernesslodge.com)  
970.209.0024 303.570.0348